

ATHEX Market Cap (€mn): 45,417.1 **Market Cap to 2013e GDP: 25.0%**

Athex Statistics as of: 14/4/15

Athens Stock Exchange - Statistics									
Indexes	Last Price	% 1d	% 1m	% 3m	% 6m	% ytd	% 52w	52w low	52w high
Athens General Index	758.63	-2.24	-1.49	-5.76	-14.66	-8.18	-36.09	708.61	1,328.60
FTSE-ASE Large Cap	225.89	-2.86	-0.50	-12.54	-22.00	-14.71	-40.99	209.48	430.97
FTSE-ASE Mid Cap	779.51	-1.02	-4.89	1.46	-5.34	0.84	-35.50	696.63	1,247.62

Sector Indexes									
Index	Last Price	% 1d	% 1m	% 3m	% 6m	% ytd	% 52w	52w low	52w high
Banks	520.91	-8.28	-7.32	-45.50	-56.12	-45.84	-70.90	517.18	1,977.20
Telecoms	2,166.27	-4.95	-8.38	-10.57	-15.38	-13.52	-22.08	1,995.61	3,371.90
Oil-Gas	1,913.76	5.63	2.85	14.02	1.48	5.45	-26.85	1,608.57	2,795.48
Industrials	2,052.03	-1.77	-3.73	4.40	-8.72	5.01	-34.95	1,816.11	3,436.90
Construction - Materials	2,257.24	-0.73	-2.78	6.02	2.01	3.31	-24.26	2,028.53	3,482.98
Technology	706.47	0.04	1.11	-2.89	-5.58	-2.70	-33.11	622.75	1,131.99
Commerce	4,341.81	-4.00	-11.33	-8.15	-7.34	-4.63	-30.34	3,847.16	7,080.80
Food & Beverage	6,996.02	0.41	19.71	33.69	17.03	19.43	3.44	5,066.70	7,067.19
Health	118.96	0.67	-5.07	-13.79	-27.69	-17.58	-53.38	111.03	268.80
Financial Services	961.02	-1.69	-9.67	-1.79	-14.72	-4.05	-50.95	900.30	2,115.96
Personal & Household	4,341.81	-4.00	-11.33	-8.15	-7.34	-4.63	-30.34	3,847.16	7,080.80
Basic Resources	2,382.89	-2.04	3.98	25.10	5.63	23.58	-17.57	1,753.11	3,093.24
Retail	3,642.59	-1.48	-6.31	-5.50	8.50	-4.20	12.30	3,190.40	4,836.94
Real Estate	2,145.33	-3.26	-8.45	-4.30	-15.14	-5.98	-22.94	2,145.33	2,984.83
Travelling - Leisure	1,562.01	1.43	3.62	-1.84	7.08	1.88	-12.01	1,238.26	2,304.69
Utilities	1,908.96	-5.35	-6.38	1.03	-20.83	-9.03	-48.68	1,711.47	4,302.24

Futures							
(June 2015 expiration for stock futures)	Settl. Price	Premium/Discount (%)	% 1d	Open Interest	Δ Open Interest	Days to expire	Open Interest*
FTSE-20 April 2015	228.75	1.27	-0.87	29,551	-	2	39,636
ALPHA BANK A.E.	0.247	2.92	-7.84	83,878	-	65	83,928
NATL BANK GREECE	1.08	0.00	-4.42	42,726	-	65	42,927
PIRAEUS BANK	0.322	3.54	-3.59	123,274	-	65	123,374
MYTILINEOS HLDGS	5.77	-0.35	-1.54	3,982	-	65	3,982
PUBLIC POWER COR	5.06	1.20	-6.30	3,426	-	65	3,426
HELLENIC TELECOM	8.00	1.65	-3.61	6,038	-	65	6,038
OPAP SA	8.58	-2.50	2.26	1,204	-	65	1,204

* Open interest for all expiration dates

Athens Stock Exchange - Valuation Ratios									
Price to Earnings (x)				Price to Book Value (x)			Dividend Yield (Gross) (%)		
2014a*	LTM**	2015e	2016e	2014a*	2015e	2016e	2014a	2015e	2016e
N/A	N/A	13.2	8.3	0.8	0.7	0.6	1.9	2.8	3.5
N/A	N/A	14.7	8.3	0.9	0.7	0.7	1.4	2.7	3.5
N/A	N/A	N/A	14.3	0.6	0.6	N/A	1.9	0.8	0.8

* 2014 P/E and P/Book ratios are calculated using the price of the index at 31.12.14

** Last 12 months (Trailing 12 months)

Government Bonds, Spreads & CDS					
	Last Yield	1d, net	6m, net	ytd, net	CDS Spread*
Greece					
2Yr Bond	N/A	-	-	-	3,527
5Yr Bond	16.604	0.98	11.57	5.26	2,242
10Yr Bond	11.830	0.25	4.82	2.09	1,547
Germany					
2Yr Bond	-0.2780	0.00	-0.23	-0.18	-
5Yr Bond	-0.1360	-0.01	-0.28	-0.15	16
10Yr Bond	0.1380	-0.02	-0.70	-0.40	40
France					
5Yr Bond	0.000	-0.01	-0.32	-0.18	38
10Yr Bond	0.407	-0.03	-0.79	-0.42	77
Spain					
5Yr Bond	0.576	0.03	-0.29	-0.30	87
10Yr Bond	1.295	0.04	-0.75	-0.32	132
Italy					
5Yr Bond	0.563	0.03	-0.48	-0.39	111
10Yr Bond	1.310	0.03	-0.99	-0.58	155
Portugal					
5Yr Bond	0.801	0.02	-0.88	-0.65	133
10Yr Bond	1.758	0.07	-1.31	-0.93	196
United States					
5Yr Bond	1.3259	-0.01	-0.02	-0.33	-
10Yr Bond	1.8836	-0.01	-0.25	-0.29	-
30Yr Bond	2.5291	-0.01	-0.39	-0.22	-

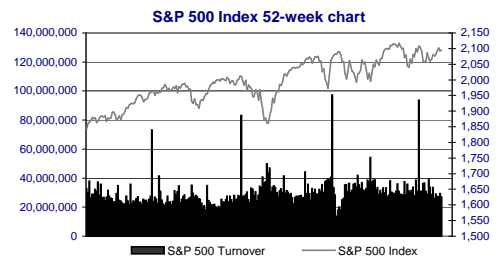
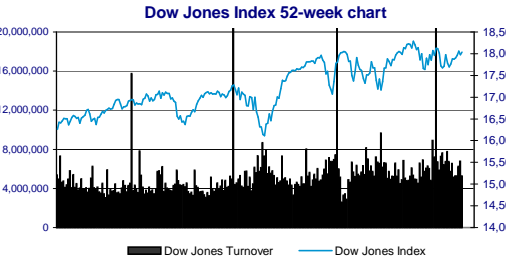
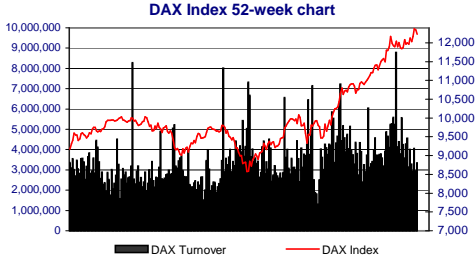
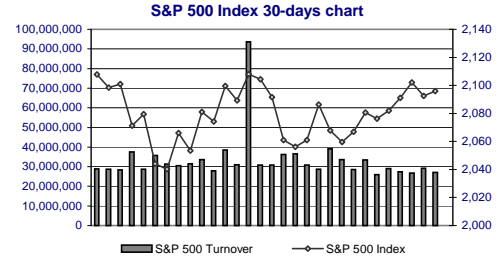
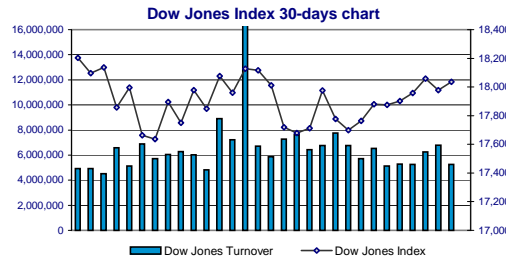
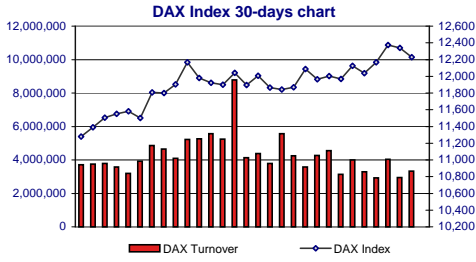
* Generic CDS Intraday Prices. Due to liquidity reasons, pricing sources may vary

** vs German Bund, in bps

Macroeconomic Snapshots / Credit Ratings											
(%)	Real GDP YoY	Real GDP QoQ	Debt to GDP	Budget Balance to GDP	CPI YoY	CPI MoM	Retail Sales YoY	Unemployment Rate (monthly)	Moody's	S&P	Fitch
Eurozone	0.90	0.30	90.90	-2.60	-0.10	1.10	3.00	11.30			
Greece	1.30	-0.40	174.90	-12.20	-2.14	2.36	-2.60	26.00	Caa1	+	CCC
Germany	1.40	0.70	74.70	0.10	0.30	0.50	3.60	6.40	Aaa	AAU	AAA
France	0.20	0.50	93.40	-4.10	-0.30	0.70	3.90	10.00	Aa1	AU	AA
Spain	2.00	0.70	92.10	-6.80	-0.70	0.60	2.60	23.20	Baa2	BBB	BBB+
Italy	-0.50	-0.03	132.11	-2.80	-0.10	0.10	1.68	12.70	Baa2	BBU	BBB+
Portugal	0.70	0.50	128.00	-4.90	0.31	1.90	2.20	14.10	Ba1	BBU	BB+
US	2.40	2.20	71.80	-2.80	0.00	0.22	1.30	5.50	Aaa	AA+U	AAA

Definitions: +: watch list negative, WR: rating withdrawn

Notes: GDP refers to quarterly data (Q1, Q2, Q3, Q4). All other macro indicators involve monthly data



WORLD INDEXES - Statistics

Europe	Country	Last Price	% 1d	Last Upd	% 6m	% ytd	% 52w	52w Low	52w High
Athex Composite Share Pr	Greece	758.63	-2.24	14/4/2015	-14.66	-8.18	-36.09	708.61	1,328.60
DAX INDEX	Germany	12,227.60	-0.90	14/4/2015	42.65	24.70	33.29	8,354.97	12,390.75
CAC 40 INDEX	France	5,218.06	-0.69	14/4/2015	32.45	22.12	20.08	3,789.11	5,262.74
FTSE 100 INDEX	UK	7,075.26	0.16	14/4/2015	13.90	7.75	8.16	6,072.68	7,095.36
IBEX 35 INDEX	Spain	11,704.70	-1.36	14/4/2015	18.97	13.86	15.85	9,370.50	11,884.60
PSI All-Share Index GR	Portugal	2,767.97	-0.96	14/4/2015	21.66	30.05	-6.69	2,053.74	3,170.54
FTSE MIB INDEX	Italy	23,752.91	-1.07	14/4/2015	29.76	24.94	14.10	17,555.77	24,047.58
IRISH OVERALL INDEX	Ireland	6,263.23	-0.02	14/4/2015	42.95	19.88	29.21	4,275.26	6,285.24
OMX STOCKHOLM 30 INDEX	Sweden	1,701.39	0.06	14/4/2015	33.98	16.17	27.99	1,246.56	1,719.44
LUXEMBOURG LuxX INDEX	Luxembourg	1,801.76	1.45	14/4/2015	29.30	18.51	19.94	1,353.57	1,801.76
AUSTRIAN TRADED ATX INDX	Austria	2,628.14	-0.70	14/4/2015	28.88	21.67	7.69	1,980.53	2,656.84
OMX COPENHAGEN 20 INDEX	Denmark	990.51	-0.84	14/4/2015	44.08	33.06	48.03	664.69	1,003.61
SWISS MARKET INDEX	Switzerland	9,415.62	-0.16	14/4/2015	15.60	4.81	13.71	7,852.83	9,474.95
Emerging Europe									
BIST 100 INDEX	Turkey	82,319.71	0.47	14/4/2015	9.97	-3.97	13.64	71,166.64	91,805.74
SOFIX INDEX	Bulgaria	506.52	-1.30	14/4/2015	-3.69	-2.98	-14.90	474.82	612.93
WSE WIG INDEX	Poland	54,971.31	-0.10	14/4/2015	4.83	6.91	7.23	49,321.83	55,687.59
BUCHAREST BET INDEX	Romania	7,336.35	1.14	14/4/2015	6.45	3.58	13.04	6,317.61	7,355.66
BRIC									
BRAZIL IBOVESPA INDEX	Brazil	53,981.92	-0.48	14/4/2015	-3.84	7.95	6.99	45,852.81	62,304.88
MICEX INDEX	Russia	1,647.39	0.00	8:43:24 ttp	19.63	17.96	25.66	1,260.43	1,848.13
S&P BSE SENSEX INDEX	India	28,960.34	-0.29	8:53:52 ttp	9.91	5.31	27.98	22,247.39	30,024.74
SHANGHAI SE COMPOSITE	China	4,133.44	-0.05	8:53:55 ttp	74.14	27.79	96.68	1,991.06	4,168.35
US									
DOW JONES INDUS. AVG	US	18,036.70	0.33	14/4/2015	11.74	1.20	10.91	15,855.12	18,288.63
NASDAQ COMPOSITE INDEX	US	4,977.29	-0.22	12:16:00 ttp	18.08	5.09	23.38	3,946.03	5,042.14
S&P 500 INDEX	US	2,095.84	0.16	14/4/2015	12.53	1.79	13.72	1,816.29	2,119.59
Asia, Pacific									
NIKKEI 225	Japan	19,859.59	-0.25	8:48:45 ttp	31.75	13.80	41.89	13,964.43	20,006.00
HANG SENG INDEX	Hong Kong	27,639.62	0.28	8:53:54 ttp	19.44	17.09	21.91	21,680.33	28,031.96
Strait Times Index STI	Singapore	3,540.62	0.55	8:53:52 ttp	10.69	5.21	9.07	3,149.91	3,541.63
S&P/ASX 200 INDEX	Australia	5,907.80	-0.65	9:08:36 ttp	12.62	9.18	9.64	5,122.00	5,996.90
Volatility & Risk Indexes									
VDAX	DAX	17.78	4.77	14/4/2015	-24.57	-8.73	-3.21	10.80	24.09
VIX	S&P 500	13.67	-1.94	14/4/2015	-47.92	-28.80	-12.43	10.28	31.06
VXN	Nasdaq 100	15.46	0.06	14/4/2015	-42.85	-21.28	-29.44	9.66	31.17
MARKIT ITRX EUROPE 06/20 (Generic)	Europe	54.96	-	7:09:44 ttp	-27.75	-12.64	-26.16	47.30	86.38
MARKIT ITRX EUR XOVER 06/20 (Gener	Europe	253.00	-	7:09:44 ttp	-36.91	-26.87	-14.30	218.43	429.90

WORLD INDEXES - Valuation Ratios

	Price to Earnings (x)			Price to Book (x)			Dividend Yield (%)		
	2014*	LTM **	2015e	2014*	2015e	2016e	2014*	2015e	2016e
N/A	N/A	13.2	8.3	0.8	0.7	0.6	1.9	2.8	3.5
18.2	20.4	15.7	14.2	1.7	1.9	1.8	2.7	2.6	2.8
25.6	24.2	17.0	14.9	1.4	1.6	1.5	3.3	3.1	3.3
16.7	24.1	16.5	14.5	1.9	1.9	1.8	4.7	3.8	4.1
16.5	22.1	16.7	14.3	1.5	1.5	1.5	6.2	3.4	3.7
N/A	N/A	17.7	12.0	1.0	1.4	1.3	3.8	3.1	3.4
180.7	92	17.7	14.5	1.0	1.2	1.2	3.0	3.1	3.5
52.4	24.6	19.1	16.3	1.9	2.2	2.0	1.4	1.4	2.0
17.0	18.3	17.2	16.1	2.2	2.5	2.3	3.5	3.7	3.9
56.0	21.2	23.0	17.7	1.1	1.4	1.3	2.7	2.3	2.5
24.7	N/A	16.1	12.5	0.9	1.1	1.0	2.8	2.8	3.2
19.7	31.1	21.3	18.2	2.9	3.5	3.2	1.7	2.0	2.4
18.4	20.0	18.4	16.8	2.6	2.7	2.6	3.0	3.1	3.4
9.9	9.3	10.2	8.9	1.5	1.3	1.2	1.8	3.0	3.2
7.0	12.4	N/A	N/A	0.6	N/A	N/A	3.5	N/A	N/A
17.5	24.7	14.7	13.0	1.3	1.3	1.3	3.5	3.3	3.8
11.9	12.5	10.5	9.4	1.0	1.0	0.9	3.7	3.8	5.1
29.7	14.8	13.3	10.6	1.3	1.3	1.2	4.7	3.9	4.2
6.7	7.7	6.5	5.6	0.4	0.5	0.5	5.2	4.3	5.3
16.7	20.3	16.2	13.7	2.9	2.6	2.3	1.4	1.6	1.8
10.3	20.4	16.6	14.5	1.9	2.1	1.9	2.0	1.7	2.0

* 2014 P/E and P/Book ratios are calculated using the price of the index at 31.12.14

** Last 12 months (Trailing 12 months)

COMMODITIES

Energy	Exchange	Last Price	% 1d	Last Upd	% 6m	% ytd	% 52w	52w Low	52w High
Dated BFO Crude Oil Spot Px (\$/bbl)	-	57.71	0.21	9:08:00 ttp	-30.57	3.50	-46.94	-	-
WTI Crude Futr-Generic 1st month (\$/bbl)	NYM	53.59	0.56	9:08:55 ttp	-34.47	0.60	-48.35	42.03	107.73
Brent Crude Futr-Generic 1st month (\$/bbl)	ICE	58.93	0.86	8:46:37 ttp	-29.66	2.79	-45.81	45.19	115.71
Natural Gas Futr-Generic 1st month (\$/bb)	NYM	2.50	-1.26	9:08:37 ttp	-34.26	-13.53	-45.30	2.47	4.89
Precious Metals									
GOLD SPOT \$/OZ	-	1,194.41	0.14	9:08:54 ttp	-3.83	0.81	-8.31	1131.24	1345.46
SILVER SPOT \$/OZ	-	16.22	0.27	9:08:12 ttp	-7.18	3.30	-17.31	14.29	21.58
PLATINUM SPOT \$/OZ	-	1,153.85	0.13	9:08:38 ttp	-8.60	-4.48	-19.89	1086.93	1521.38
PALLADIUM SPOT \$/OZ	-	766.25	0.15	9:08:54 ttp	-0.10	-3.95	-3.56	724.60	912.00
Base Metals									
LME ALUMINUM 3MO (\$)/ MT	LME	1,789.00	1.36	14/4/2015	-8.26	-3.43	-4.94	1744.85	2119.50
LME COPPER 3MO (\$)/ MT	LME	5,945.00	-0.75	14/4/2015	-12.57	-5.63	-10.83	5339.50	7212.00
LME LEAD 3MO (\$)/ MT	LME	1,979.00	-0.58	14/4/2015	-3.70	6.51	-6.69	1676.50	2307.00
LME NICKEL 3MO (\$)/ MT	LME	12,595.00	1.53	14/4/2015	-22.97	-16.86	-29.20	12205.00	21625.00
Agriculture									
Corn Futr-Generic 1st month (\$/bu.)	CBT	372.50	-0.27	8:58:41 ttp	7.19	-6.17	-26.05	318.25	519.50
Wheat Futr - Generic 1st month (\$/bu.)	CBT	496.25	-0.15	8:58:50 ttp	-1.93	-15.85	-29.28	466.25	735.00
Soybean Futr - Generic 1st month (\$/bu.)	CBT	963.50	0.34	8:57:22 ttp	1.15	-5.47	-35.82	904.00	1536.75
Sugar Futr - Generic 1st month (\$/lb.)	NYB	13.19	1.38	14/4/2015	-21.53	-9.16	-20.49	11.91	18.28
Coffee Futr - Generic 1st month (\$/lb.)	NYB	134.60	0.64	14/4/2015	-39.34	-19.21	-34.29	129.05	225.50
Live Cattle Futr - Generic 1st month (\$/lb.)	CME	159.60	0.49	14/4/2015	-2.89	-3.68	9.80	135.40	171.98
Lean Hogs Futr - Generic 1st month (\$/lb.)	CME	63.18	0.12	14/4/2015	-42.32	-22.20	-49.38	57.78	133.90

Currencies	Price	% 1d	% 6m	% ytd	% 52w	52wLow	52wHigh
EUR / US Dollar	1.0631	-0.26	-16.89	-12.14	-23.07	1.0457	1.3994
EUR/Japanese Yen	127.18	-0.02	-6.04	-12.30	-9.36	126.09	149.80
EUR / British Pound	0.7205	-0.08	-10.22	-7.22	-12.79	0.7014	0.8272
EUR / Swiss Franc	1.0360	0.00	-14.13	-13.85	-14.79	0.7813	1.2239
EUR / Canadian Dollar	1.3281	-0.24	-8.00	-5.50	-12.47	1.3256	1.5307
EUR / Australian Dollar	1.4000	0.28	-3.85	-5.53	-5.27	1.3719	1.5333
EUR / Turkish Lira	2.8630	-0.04	-1.48	1.19	-3.28	2.6045	3.0341

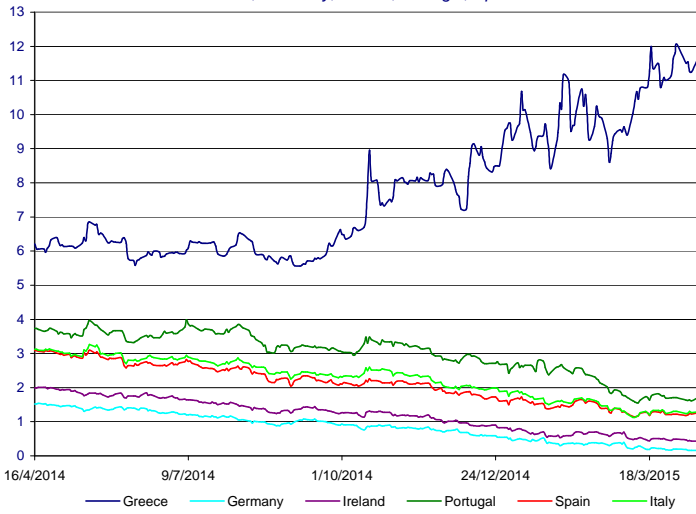
Money Market Rates	1w	1m	3m	6m	9m	12m
Europe	-0.0750	-0.0240	0.0110	0.0780	0.1270	0.1870
US	0.1470	0.1815	0.2753	0.4052	0.5508	0.7034
Japan	0.0507	0.0693	0.0943	0.1364	0.3543	0.2547

Interest Rates	Latest Rate	Last Update	Next Update	
Europe	ECB	0.05	5/3/2015	15/4/2015
UK	BoE	0.50	9/4/2015	11/5/2015
US	Fed	0.25	18/3/2015	29/4/2015
Japan	BoJ	0.10	22/1/2014	*

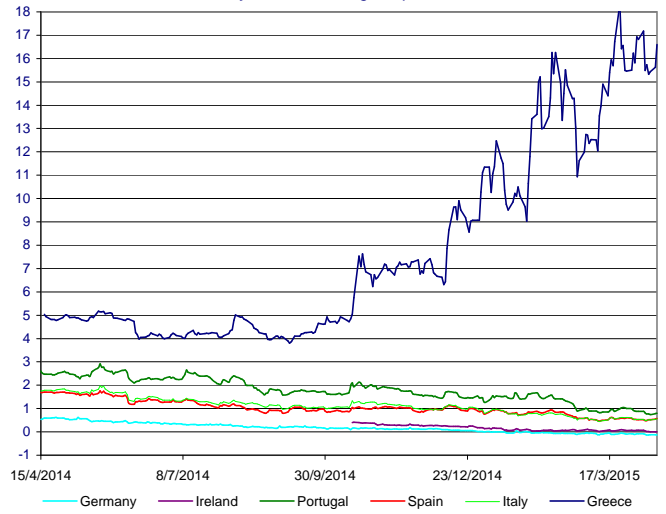
* As of 4/4/2013, the BOJ has shifted its monetary policy focus to a targeted monetary base via Japanese government bond (JGB) purchases.

Bonds, Spreads, CDS

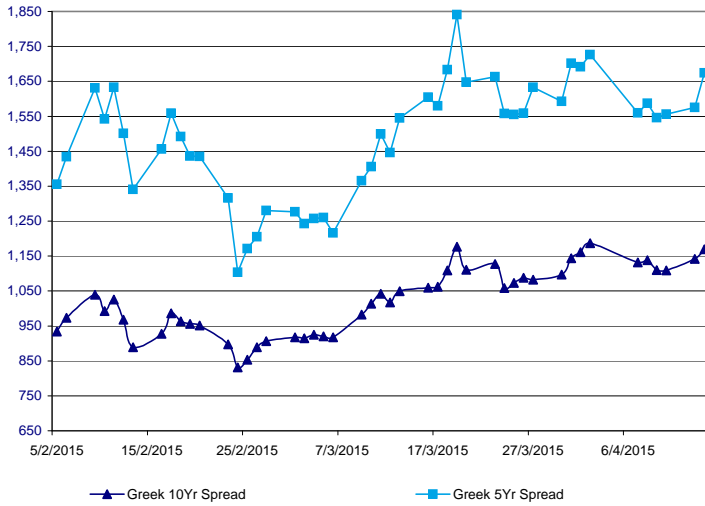
10 Yr Bond Yields
 Greece, Germany, Ireland, Portugal, Spain



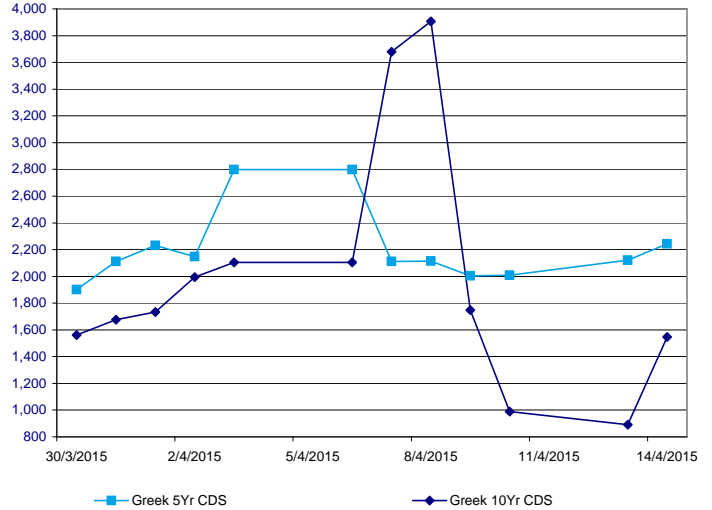
5 Yr Bond Yields
 Germany, Ireland, Portugal, Spain, Greece



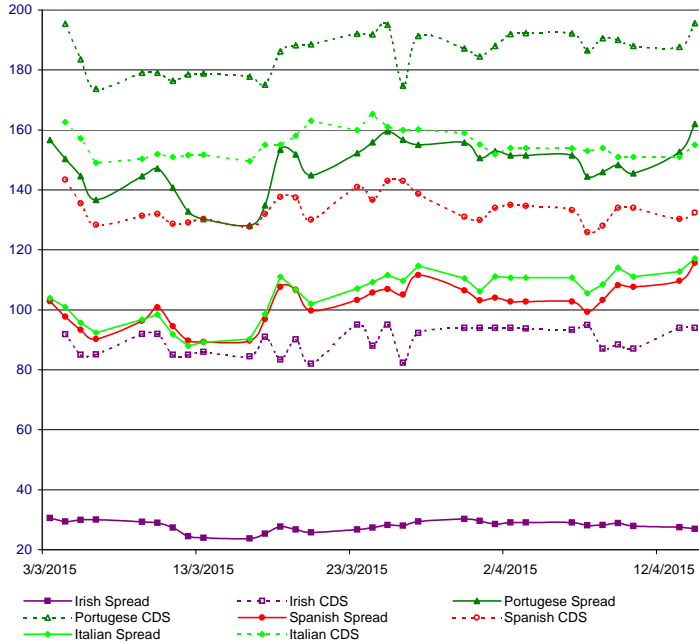
Greek Spreads, 10 Yr Bonds (5 Yr n/a)



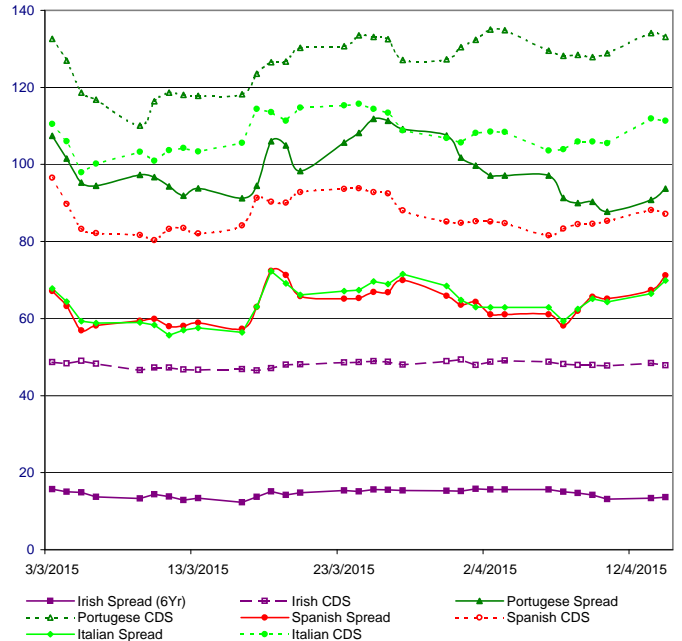
Greek CDS, 5 Yr & 10 Yr Bonds (CMAN pricing)



Spreads and CDS, 10 Yr Bonds
 Ireland, Portugal, Italy, Spain (CBIL pricing for CDS)

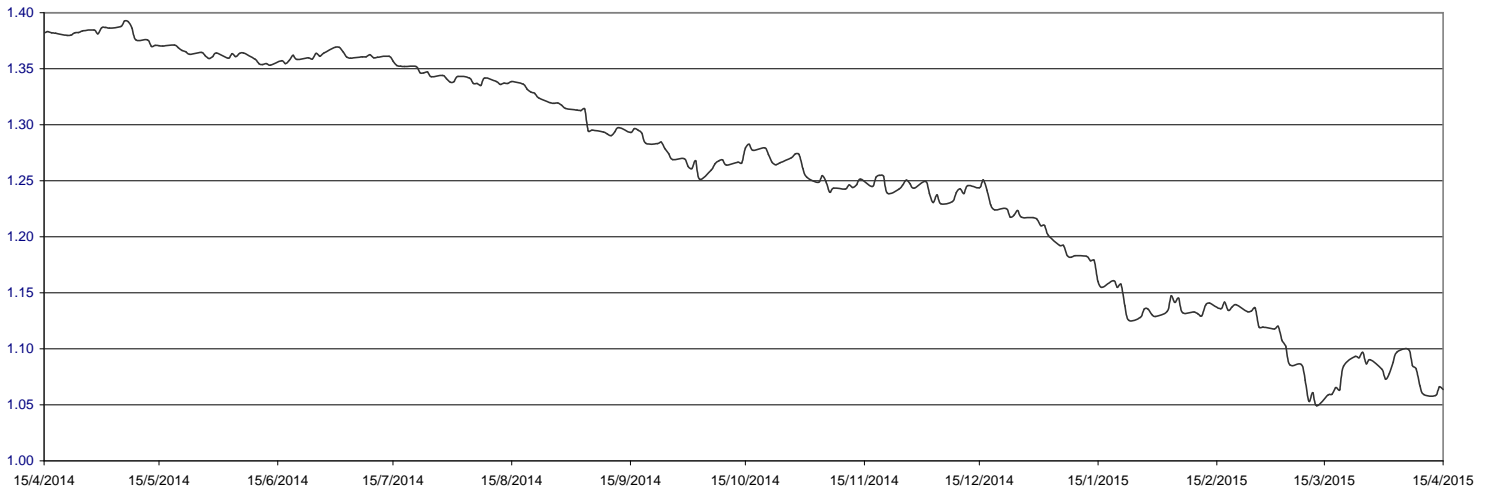


Spreads and CDS, 5 Yr Bonds
 Ireland, Portugal, Italy, Spain (CBIL pricing for CDS)

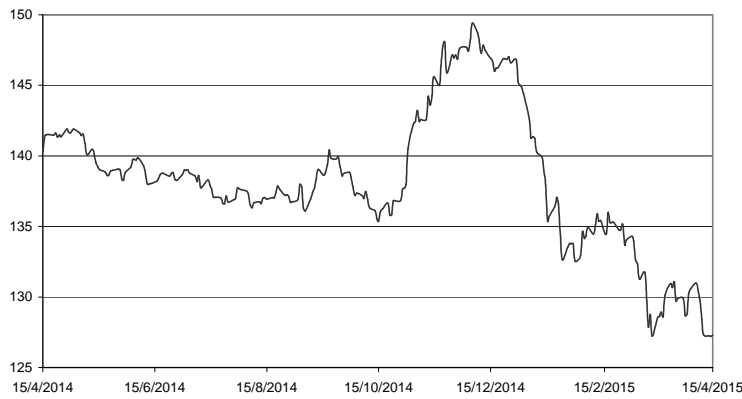


Currencies

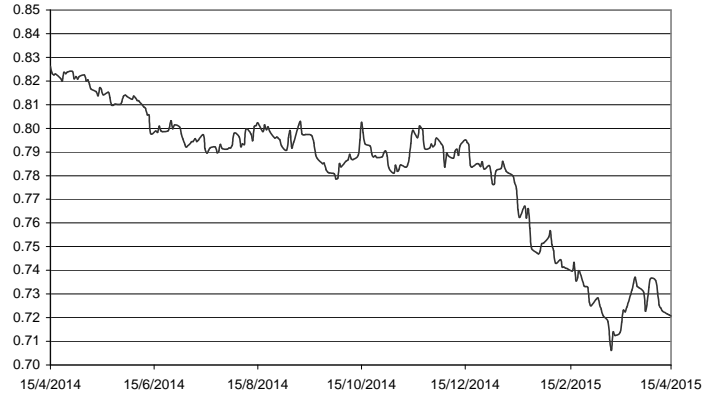
Euro / US Dollar 1.0631 -0.26%



Euro / Japanese Yen 127.18 -0.02%

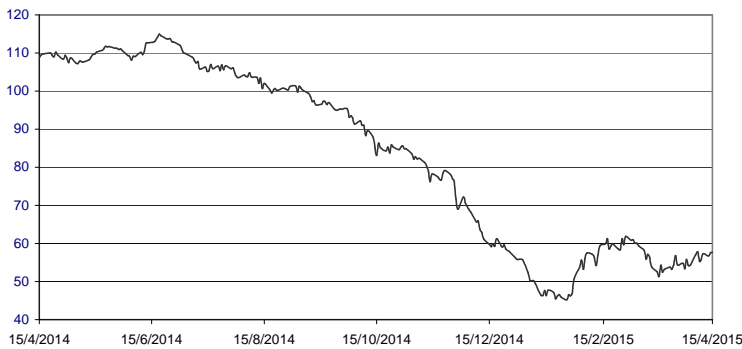


Euro / British Pound 0.7205 -0.08%

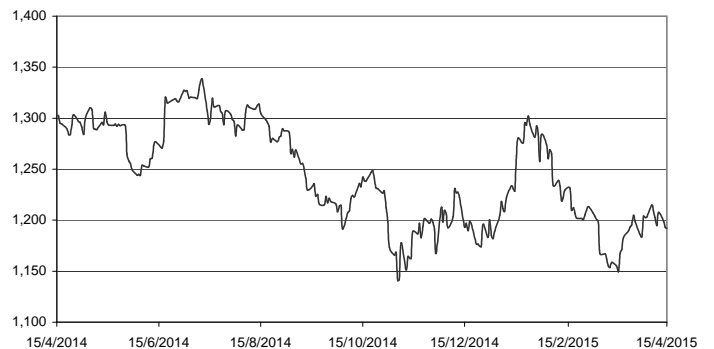


Commodities, (Precious) Metals

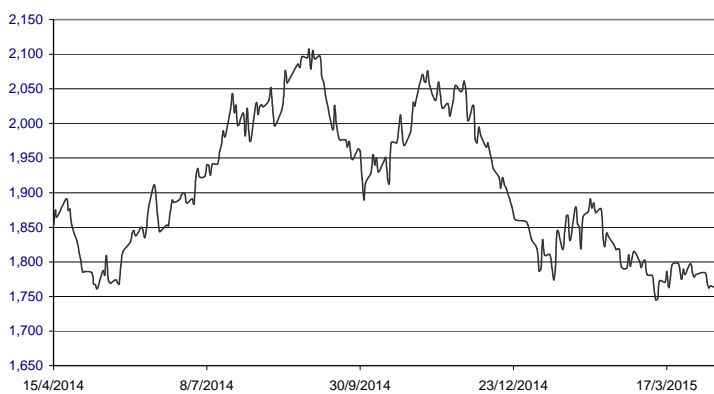
Dated BFO Crude Oil Spot Px (\$/bbl) 57.71 0.21%



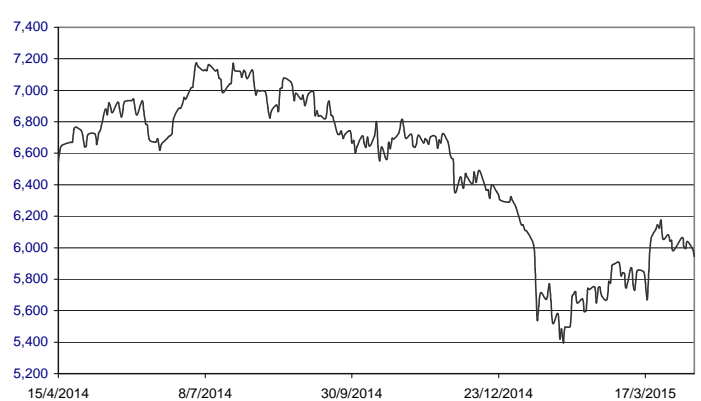
Gold, Spot (\$/OZ) 1,194.41 0.14%



Aluminum (3MO Future) (\$/MT) 1,789.00 1.36%



Copper (3MO Future) (\$/MT) 5,945.00 -0.75%



Macroeconomic Calendar

Regions included: EC, Greece, Germany, France, Portugal, Italy, Spain, Ireland, United Kingdom, US, China, Japan

Date Time	Event	Survey	Actual	Prior	Revised	
04/14/2015 02:01	UK 1) BRC Sales Like-For-Like YoY	Mar	0.50%	3.20%	0.20%	--
04/14/2015 09:00	GE 2) Wholesale Price Index MoM	Mar	--	1.00%	0.50%	--
04/14/2015 09:00	GE 3) Wholesale Price Index YoY	Mar	--	-1.10%	-2.10%	--
04/14/2015 10:00	SP 4) CPI EU Harmonised MoM	Mar	2.10%	2.00%	0.10%	--
04/14/2015 10:00	SP 5) CPI EU Harmonised YoY	Mar F	-0.70%	-0.80%	-0.70%	--
04/14/2015 10:00	SP 6) CPI MoM	Mar F	0.60%	0.60%	0.20%	--
04/14/2015 10:00	SP 7) CPI YoY	Mar F	-0.70%	-0.70%	-0.70%	--
04/14/2015 10:00	SP 8) CPI Core MoM	Mar	0.50%	0.50%	0.00%	--
04/14/2015 10:00	SP 9) CPI Core YoY	Mar	0.20%	0.20%	0.20%	--
04/14/2015 11:00	IT 10) CPI FOI Index Ex Tobacco	Mar	--	107	106.8	--
04/14/2015 11:00	IT 11) CPI EU Harmonized YoY	Mar F	-0.10%	0.00%	-0.10%	--
04/14/2015 11:03	CH 12) New Yuan Loans CNY	Mar	1040.0B	1180.0B	1020.0B	--
04/14/2015 11:03	CH 13) Money Supply M2 YoY	Mar	12.40%	11.60%	12.50%	--
04/14/2015 11:05	CH 14) Money Supply M1 YoY	Mar	5.60%	2.90%	5.60%	--
04/14/2015 11:05	CH 15) Money Supply M0 YoY	Mar	3.80%	6.20%	17.00%	--
04/14/2015 11:06	CH 16) Aggregate Financing CNY	Mar	1500.0B	1180.0B	1350.0B	1353.2B
04/14/2015 11:06	CH 17) Foreign Reserves	Mar	\$3820.0B	\$3730.0B	\$3840.0B	\$3843.0B
04/14/2015 11:30	IT 18) General Government Debt	Feb	--	2169.2B	2165.9B	--
04/14/2015 11:30	UK 19) CPI MoM	Mar	0.20%	0.20%	0.30%	--
04/14/2015 11:30	UK 20) CPI YoY	Mar	0.00%	0.00%	0.00%	--
04/14/2015 11:30	UK 21) CPI Core YoY	Mar	1.20%	1.00%	1.20%	--
04/14/2015 11:30	UK 22) Retail Price Index	Mar	257.4	257.1	256.7	--
04/14/2015 11:30	UK 23) RPI MoM	Mar	0.30%	0.20%	0.50%	--
04/14/2015 11:30	UK 24) RPI YoY	Mar	1.00%	0.90%	1.00%	--
04/14/2015 11:30	UK 25) RPI Ex Mort Int.Payments (YoY)	Mar	1.00%	0.90%	1.00%	--
04/14/2015 11:30	UK 26) PPI Input NSA MoM	Mar	-0.40%	0.30%	0.20%	0.10%
04/14/2015 11:30	UK 27) PPI Input NSA YoY	Mar	-13.50%	-13.00%	-13.50%	--
04/14/2015 11:30	UK 28) PPI Output NSA MoM	Mar	0.10%	0.20%	0.20%	--
04/14/2015 11:30	UK 29) PPI Output NSA YoY	Mar	-1.80%	-1.70%	-1.80%	-1.70%
04/14/2015 11:30	UK 30) PPI Output Core NSA MoM	Mar	0.10%	0.00%	0.10%	0.00%
04/14/2015 11:30	UK 31) PPI Output Core NSA YoY	Mar	0.10%	0.10%	0.20%	0.30%
04/14/2015 11:30	UK 32) ONS House Price YoY	Feb	--	7.20%	8.40%	--
04/14/2015 12:00	EC 33) Industrial Production SA MoM	Feb	0.40%	1.10%	-0.10%	-0.30%
04/14/2015 12:00	EC 34) Industrial Production WDA YoY	Feb	0.80%	1.60%	1.20%	0.40%
04/14/2015 15:30	US 35) Retail Sales Advance MoM	Mar	1.10%	0.90%	-0.60%	-0.50%
04/14/2015 15:30	US 36) Retail Sales Ex Auto MoM	Mar	0.70%	0.40%	-0.10%	0.00%
04/14/2015 15:30	US 37) Retail Sales Ex Auto and Gas	Mar	0.60%	0.50%	-0.20%	-0.30%
04/14/2015 15:30	US 38) Retail Sales Control Group	Mar	0.50%	0.30%	0.00%	-0.20%
04/14/2015 15:30	US 39) PPI Final Demand MoM	Mar	0.20%	0.20%	-0.50%	--
04/14/2015 15:30	US 40) PPI Ex Food and Energy MoM	Mar	0.10%	0.20%	-0.50%	--
04/14/2015 15:30	US 41) PPI Ex Food, Energy, Trade MoM	Mar	0.10%	0.20%	0.00%	--
04/14/2015 15:30	US 42) PPI Final Demand YoY	Mar	-0.90%	-0.80%	-0.60%	--
04/14/2015 15:30	US 43) PPI Ex Food and Energy YoY	Mar	0.90%	0.90%	1.00%	--
04/14/2015 15:30	US 44) PPI Ex Food, Energy, Trade YoY	Mar	0.80%	0.80%	0.70%	--
04/14/2015 16:00	US 45) NFIB Small Business Optimism	Mar	98	95.2	98	--
04/14/2015 17:00	US 46) Business Inventories	Feb	0.20%	0.30%	0.00%	--
04/15/2015 04:00	JN 47) Bloomberg April Japan Economic Survey (Table)					
04/15/2015 05:00	CH 48) Retail Sales YoY	Mar	10.90%	10.20%	--	--
04/15/2015 05:00	CH 49) Retail Sales YTD YoY	Mar	10.80%	10.60%	10.70%	--
04/15/2015 05:00	CH 50) Industrial Production YoY	Mar	7.00%	5.60%	--	--
04/15/2015 05:00	CH 51) Industrial Production YTD YoY	Mar	6.90%	6.40%	6.80%	--
04/15/2015 05:00	CH 52) Fixed Assets Ex Rural YTD YoY	Mar	13.90%	13.50%	13.90%	--
04/15/2015 05:00	CH 53) GDP YoY	1Q	7.00%	7.00%	7.30%	--
04/15/2015 05:00	CH 54) GDP SA QoQ	1Q	1.40%	1.30%	1.50%	--
04/15/2015 05:00	CH 55) GDP YTD YoY	1Q	7.00%	7.00%	7.40%	--
04/15/2015 05:30	CH 56) Bloomberg GDP Monthly Estimate YoY	Mar	--	6.35%	6.28%	--
04/15/2015 07:30	JN 57) Industrial Production MoM	Feb F	--	-3.10%	-3.40%	--
04/15/2015 07:30	JN 58) Industrial Production YoY	Feb F	--	-2.00%	-2.60%	--
04/15/2015 07:30	JN 59) Capacity Utilization MoM	Feb	--	-3.20%	3.60%	--
04/15/2015 09:00	GE 60) CPI MoM	Mar F	0.50%	0.50%	0.50%	--
04/15/2015 09:00	GE 61) CPI YoY	Mar F	0.30%	0.30%	0.30%	--
04/15/2015 09:00	GE 62) CPI EU Harmonized MoM	Mar F	0.50%	0.50%	0.50%	--
04/15/2015 09:00	GE 63) CPI EU Harmonized YoY	Mar F	0.10%	0.10%	0.10%	--
04/15/2015 09:45	FR 64) CPI EU Harmonized MoM	Mar	0.80%	--	0.70%	--
04/15/2015 09:45	FR 65) CPI EU Harmonized YoY	Mar	0.00%	--	-0.30%	--
04/15/2015 09:45	FR 66) CPI MoM	Mar	0.70%	--	0.70%	--
04/15/2015 09:45	FR 67) CPI YoY	Mar	0.00%	--	-0.30%	--
04/15/2015 09:45	FR 68) CPI Ex-Tobacco Index	Mar	126.3	--	125.37	--
04/15/2015 12:00	EC 69) Trade Balance SA	Feb	22.0B	--	21.6B	22.8B
04/15/2015 12:00	EC 70) Trade Balance NSA	Feb	21.0B	--	7.9B	--
04/15/2015 13:00	IR 71) Trade Balance	Feb	--	--	3891M	--
04/15/2015 14:00	US 72) MBA Mortgage Applications	Apr 10	--	--	0.40%	--
04/15/2015 14:45	EC 73) ECB Main Refinancing Rate	Apr 15	0.05%	--	0.05%	--
04/15/2015 14:45	EC 74) ECB Deposit Facility Rate	Apr 15	-0.20%	--	-0.20%	--
04/15/2015 14:45	EC 75) ECB Marginal Lending Facility	Apr 15	0.30%	--	0.30%	--
04/15/2015 15:30	US 76) Empire Manufacturing	Apr	7.17	--	6.9	--
04/15/2015 16:15	US 77) Industrial Production MoM	Mar	-0.30%	--	0.10%	--
04/15/2015 16:15	US 78) Capacity Utilization	Mar	78.60%	--	78.90%	--
04/15/2015 16:15	US 79) Manufacturing (SIC) Production	Mar	0.10%	--	-0.20%	--
04/15/2015 17:00	US 80) NAHB Housing Market Index	Apr	55	--	53	--
04/15/2015 21:00	US 81) U.S. Federal Reserve Releases Beige Book					
04/15/2015 23:00	US 82) Net Long-term TIC Flows	Feb	--	--	-\$27.2B	--
04/15/2015 23:00	US 83) Total Net TIC Flows	Feb	--	--	\$88.3B	--
04/15/2015 04/18	CH 84) Foreign Direct Investment YoY	Mar	--	--	--	--
04/15/2015 04/18	CH 85) Foreign Direct Investment YoY CNY	Mar	1.30%	--	--	--
04/16/2015 02:01	UK 86) RICS House Price Balance	Mar	15%	--	14%	--
04/16/2015 02:50	JN 87) Japan Buying Foreign Bonds	Apr 10	--	--	¥3073.5B	--
04/16/2015 02:50	JN 88) Japan Buying Foreign Stocks	Apr 10	--	--	¥424.4B	--

Economic Events Calendar

Regions included: EC, Greece, Germany, France, Portugal, Italy, Spain, Ireland, United Kingdom, US, China, Japan

04/15/2015 03:00	US	1)	Fed's Kocherlakota Holds Open Forum in Winona, Minnesota
04/15/2015 11:00	FR	2)	French Cabinet Meets to Approve 3 Year Budget and Reform Plan
04/15/2015 12:30	PO	3)	Portugal Holds Auctions for Three-, 11-Month Bills
04/15/2015 13:00	PO	4)	Portugal Releases Tourist Activity Report
04/15/2015 13:30	PO	5)	Iran's Zarif Meets Portugal's Macheite in Lisbon
04/15/2015 14:30	US	6)	FMR Treasury Secretary Paulson Speaks at Event in NYC
04/15/2015 15:30	EC	7)	ECB to Hold Press Conference After Rate Decision
04/15/2015 15:45	US	8)	World Economic Leaders Meet in Washington
04/15/2015 15:45	EC	9)	NATO's Stoltenberg, Montenegro's Prime Minister Brief Press
04/15/2015 16:00	US	10)	Fed's Bullard Speaks on Financial Regulation in Washington
04/15/2015 16:00	EC	11)	European Parliament Starts Two-Day Plenary Session
04/15/2015 16:00	US	12)	IMF to Have Briefing on Global Financial Stability Report
04/15/2015 17:00	EC	13)	EU's Katainen Speaks at Committee of Regions in Brussels
04/15/2015	EC	14)	EU's Hill Speaks at British Bankers Conference in Brussels
04/15/2015	FR	15)	French President Hollande Begins Two-Day Visit to Switzerland
04/15/2015	US	16)	Taxes: Last Day Individuals Can File Taxes or Request Extension
04/13/2015 04/16	IT	17)	Italy Issues New 8-Year BTP Italia
04/13/2015 04/15	US	18)	Future of Energy Summit 2015 Held in New York
04/14/2015 04/19	US	19)	IMF/World Bank Meetings; IMF Chief Economist Speaks on Economy
04/14/2015 04/15	EC	20)	G-7 Leaders to Meet in Germany to Discuss Foreign Policy
04/15/2015 04/16	US	21)	24th Annual Hyman P. Minsky Conference on the Global Economy
04/16/2015 01:15	US	22)	Fed's Potter Speaks at Money Marketeers Meeting in New York
04/16/2015 02:30	US	23)	Fed's Lacker Speaks to Business Leaders in Charleston, SC
04/16/2015 12:00	GE	24)	Leading German Institutes Publish Economic Forecast, Berlin
04/16/2015 12:00	GE	25)	German Foreign Minister Steinmeier Speaks in Helsinki
04/16/2015 12:00	PO	26)	Parliamentary Commission Presents Report on Espirito Santo
04/16/2015 13:00	GE	27)	German Foreign Minister Steinmeier's Helsinki Press Conference
04/16/2015 14:00	EC	28)	EU's Mogherini Speaks to Dutch Parliament in The Hague
04/16/2015 16:00	EC	29)	EU's Hill Speaks at Centre for European Reform in London
04/16/2015 20:00	US	30)	Fed's Lockhart Speaks on Economic Outlook in West Palm Beach
04/16/2015 20:10	US	31)	Fed's Mester Speaks on Economy and Monetary Policy in New York
04/16/2015 22:00	US	32)	Fed's Fischer Speaks on Inflation Panel at IMF in Washington
04/16/2015 22:00	UK	33)	BBC to Host Debate With Leaders of Opposition Parties
04/16/2015	EC	34)	EU's Dombrovskis Visits Washington, Boston April 16-20
04/16/2015	RU	35)	Russia to Host International Security Conference
04/16/2015 04/25	CA	36)	Ontario's Ministry to Lead Trade Mission in China
04/16/2015 04/20	EC	37)	EU's Dombrovskis Visits Washington and Boston in U.S.
04/16/2015 04/18	EC	38)	Group of 20 Meets in Washington to Discuss Global Economy
04/17/2015 11:00	PO	39)	Portugal's Coelho, Lloyds CEO, BPI's Ulrich at Conference
04/17/2015 12:00	PO	40)	Portuguese Prime Minister Speaks at Debate in Parliament
04/17/2015 15:00	IT	41)	Bank of Italy Releases the Quarterly Economic Bulletin
04/17/2015 18:00	US	42)	U.S. Court of Appeals to Hear Arguments on Immigration Reform
04/17/2015 04/19	US	43)	World Bank and International Monetary Fund Spring Meeting
04/20/2015 11:00	EC	44)	EU Foreign Ministers Hold Meeting in Luxembourg

Government Auctions / Buyouts Calendar

Regions included: EC, Greece, Germany, France, Portugal, Italy, Spain, Ireland, United Kingdom, US, China, Japan

04/14/2015 06:45	JN	1)	Japan Sells JPY2.4993 Tln 5-Year Bonds; Yield 0.083%(123R)
04/14/2015 11:08	CH	2)	*China to Sell 7-Year Sovereign Bonds at 3.56%, Survey Shows
04/14/2015 18:30	US	3)	U.S. Sells USD30 Bln 4-Week Bills; High Yld 0.015%
04/15/2015 06:00	CH	4)	China to Sell 7-Year Bonds
04/15/2015 06:00	CH	5)	China to Sell CNY30 Bln 7-Year Bonds (1507)
04/15/2015 06:35	JN	6)	Japan Sells JPY2.4999 Tln 1-Year Bills; Yield -.0059%(526)
04/15/2015 09:30	CH	7)	Export-Import BOC to Sell CNY4 Bln 3-Year Bonds (1509)
04/15/2015 12:00	GR	8)	Greece to Sell EUR625 Mln 91-Day Bills
04/15/2015 12:30	GE	9)	Germany to Sell EUR4 Bln 0.5% 2025 Bonds (DE0001102374)
04/15/2015 12:30	PO	10)	Portugal to Sell 91-Day Bills
04/15/2015 12:30	PO	11)	Portugal to Sell 336-Day Bills
04/16/2015 06:00	CH	12)	Agricultural Dev Bank to Sell CNY7 Bln 3-Year Bonds (1509)
04/16/2015 06:35	JN	13)	Japan to Sell 3-Month Bill
04/16/2015 06:45	JN	14)	Japan to Sell 20-Year Bonds
04/16/2015 11:30	SP	15)	Spain to Sell 1.4% 2020 Bonds
04/16/2015 11:30	SP	16)	Spain to Sell 6% 2029 Bonds
04/16/2015 11:30	SP	17)	Spain to Sell 1.6% 2025 Bonds
04/16/2015 11:50	FR	18)	France to Sell 0% 2018 Bonds
04/16/2015 11:50	FR	19)	France to Sell 0.5% 2019 Bonds
04/16/2015 11:50	FR	20)	France to Sell 0% 2020 Bonds
04/16/2015 12:30	UK	21)	U.K. to Sell GBP1.25 Bln 0.625% I/L 2040 Bonds
04/16/2015 12:50	FR	22)	France to Sell 2.25% I/L 2020 Bonds
04/16/2015 12:50	FR	23)	France to Sell 0.25% I/L 2024 Bonds
04/16/2015 12:50	FR	24)	France to Sell 0.1% I/L 2025 Bonds
04/17/2015 06:00	CH	25)	China to sell 3-Year Bonds
04/17/2015 06:00	CH	26)	China to Sell CNY30 billion 3-Year Bonds (1504)
04/17/2015 13:00	UK	27)	U.K. to Sell GBP500 Mln 28-Day Bills
04/17/2015 13:00	UK	28)	U.K. to Sell GBP1 Bln 91-Day Bills
04/17/2015 13:00	UK	29)	U.K. to Sell GBP1.5 Bln 182-Day Bills
04/20/2015 06:00	CH	30)	China to Sell CNY15 Bln 273-Day Bills (1502)
04/20/2015 11:30	SP	31)	Spain to Sell 3 Month Bills
04/20/2015 11:30	SP	32)	Spain to Sell 9 Month Bills
04/20/2015 15:50	FR	33)	France to Sell Bills
04/20/2015 18:30	US	34)	U.S. to Sell 3-Month Bills
04/20/2015 18:30	US	35)	U.S. to Sell 6-Month Bills
04/21/2015 11:00	JN	36)	Japan Auction for Enhanced-Liquidity
04/21/2015 12:30	UK	37)	U.K. to Sell GBP1.75 Bln 3.5% 2045 Bonds
04/21/2015 13:30	EC	38)	ESM to Sell Bills
04/21/2015 18:30	US	39)	U.S. to Sell 4-Week Bills
04/22/2015 06:00	CH	40)	China to Sell 5-Year Bonds
04/23/2015 06:35	JN	41)	Japan to Sell 3-Month Bill
04/23/2015 06:45	JN	42)	Japan to Sell 40-Year Bonds
04/23/2015 20:00	US	43)	U.S. to Sell 5-Year TIPS
04/24/2015 13:00	UK	44)	U.K. to Sell 1-Month Bills

Earnings Releases Calendar

Global - Top Events

Primary Exchange	Company Name	Bloomberg Ticker	Date	Time	Period	EPS (local currency)			Currency
						Actual	Estimate	Surprise	
New York	JPMorgan Chase & Co	JPM US	14/4/2015	C 14:00	Q1 2015	1.6063	1.412	13.76%	USD
NASDAQ GS	Fastenal Co	FAST US	14/4/2015	C 14:00	Q1 2015	0.43	0.416	3.37%	USD
New York	Johnson & Johnson	JNJ US	14/4/2015	C 14:45	Q1 2015	1.56	1.533	1.76%	USD
New York	Wells Fargo & Co	WFC US	14/4/2015	C 15:00	Q1 2015	1.04	0.977	6.45%	USD
New York	CSX Corp	CSX US	14/4/2015	C 23:02	Q1 2015	0.45	0.437	2.97%	USD
NASDAQ GS	Intel Corp	INTC US	14/4/2015	C 23:05	Q1 2015	0.41	0.405	1.23%	USD
New York	Ocwen Financial Corp	OCN US	14/4/2015	C	Q4 2014	-1.98	0.269	-836.06%	USD
EN Amsterdam	ASML Holding NV	ASML NA	15/4/2015	C 8:00	Q1 2015	0.931	0.924	0.76%	EUR
New York	PNC Financial Services Group Inc/The	PNC US	15/4/2015	C Bef-mkt	Q1 2015		1.718		USD
New York	Charles Schwab Corp/The	SCHW US	15/4/2015	C Bef-mkt	Q1 2015		0.231	0.23	USD
New York	US Bancorp/MN	USB US	15/4/2015	C Bef-mkt	Q1 2015		0.762		USD
New York	Bank of America Corp	BAC US	15/4/2015	C 14:00	Q1 2015		0.292		USD
New York	Delta Air Lines Inc	DAL US	15/4/2015	C 14:30	Q1 2015		0.438		USD
NASDAQ GS	Netflix Inc	NFLX US	15/4/2015	C 23:05	Q1 2015		0.63	0.6	USD
NASDAQ GS	SanDisk Corp	SNDK US	15/4/2015	C Aft-mkt	Q1 2015		0.661		USD
New York	Kinder Morgan Inc/DE	KMI US	15/4/2015	C Aft-mkt	Q1 2015		0.213		USD
Singapore	Keppel Land Ltd	KPLD SP	15/4/2015	C	Q1 2015		0.07		SGD
London	Quindell PLC	QPP LN	15/4/2015	E	Y 2014		0.594		GBp
New York	UnitedHealth Group Inc	UNH US	16/4/2015	C Bef-mkt	Q1 2015		1.347		USD
New York	BlackRock Inc	BLK US	16/4/2015	C Bef-mkt	Q1 2015		4.504		USD
New York	Philip Morris International Inc	PM US	16/4/2015	C 14:00	Q1 2015		1.013		USD
New York	WW Grainger Inc	GWV US	16/4/2015	C 14:30	Q1 2015		3.123		USD
New York	Goldman Sachs Group Inc/The	GS US	16/4/2015	C 14:30	Q1 2015		4.257		USD
New York	Citigroup Inc	C US	16/4/2015	C 15:00	Q1 2015		1.388		USD
NASDAQ GS	Mattel Inc	MAT US	16/4/2015	C 23:05	Q1 2015		-0.096		USD
New York	American Express Co	AXP US	16/4/2015	C Aft-mkt	Q1 2015		1.367		USD
New York	Schlumberger Ltd	SLB US	16/4/2015	C Aft-mkt	Q1 2015		0.915		USD
NASDAQ CM	Advanced Micro Devices Inc	AMD US	16/4/2015	C	Q1 2015		-0.064		USD
Hong Kong	Galaxy Entertainment Group Ltd	27 HK	16/4/2015	C	Q1 2015				HKD
Singapore	Keppel Corp Ltd	KEP SP	16/4/2015	C	Q1 2015		0.185		SGD
Taiwan	(C) Taiwan Semiconductor Manufacturing Co Ltd	2330 TT	16/4/2015	C	Q1 2015		2.996		TWD
New York	Blackstone Group LP/The	BX US	16/4/2015	C	Q1 2015		1.029		USD
New York	NeuStar Inc	NSR US	16/4/2015	E	Q1 2015		1.019		USD
Stockholm	SKF AB	SKFB SS	17/4/2015	C 9:00	Q1 2015		3.248		SEK
New York	Honeywell International Inc	HON US	17/4/2015	C Bef-mkt	Q1 2015		1.393	1.385	USD
New York	General Electric Co	GE US	17/4/2015	C Bef-mkt	Q1 2015		0.297		USD
New York	Reynolds American Inc	RAI US	17/4/2015	C Bef-mkt	Q1 2015		0.792		USD
NASDAQ GS	Seagate Technology PLC	STX US	17/4/2015	C Bef-mkt	Q3 2015		1.047		USD
New York	Synchrony Financial	SYF US	17/4/2015	C Bef-mkt	Q1 2015		0.64		USD
NASDAQ GS	Cypress Semiconductor Corp	CY US	17/4/2015	E	Q1 2015		0.092	0.09	USD
Natl India	(P) Reliance Industries Ltd	RIL IN	17/4/2015	C	Y 2015		72.166		INR
Natl India	(C) Reliance Industries Ltd	RIL IN	17/4/2015	C	Y 2015		74.455		INR
Hong Kong	Great Wall Motor Co Ltd	2333 HK	17/4/2015	C	Q1 2015		0.77		HKD
NASDAQ GS	Home Loan Servicing Solutions Ltd	HLSS US	17/4/2015	E	Q1 2015		0.57		USD
New York	Halliburton Co	HAL US	20/4/2015	C Bef-mkt	Q1 2015		0.405		USD
New York	M&T Bank Corp	MTB US	20/4/2015	C Bef-mkt	Q1 2015		1.763		USD
New York	Morgan Stanley	MS US	20/4/2015	C 14:15	Q1 2015		0.781		USD
New York	International Business Machines Corp	IBM US	20/4/2015	C 23:30	Q1 2015		2.849		USD
NASDAQ GS	Lam Research Corp	LRCX US	20/4/2015	C Aft-mkt	Q3 2015		1.301	1.3	USD
New York	Royal Caribbean Cruises Ltd	RCL US	20/4/2015	C	Q1 2015		0.136	0.125	USD
SIX Swiss Ex	Credit Suisse Group AG	CSGN VX	21/4/2015	C 7:30	Q1 2015		0.707		CHF
Stockholm	TeliaSonera AB	TLSN SS	21/4/2015	C 8:00	Q1 2015		0.875		SEK
SIX Swiss Ex	Actelion Ltd	ATLN VX	21/4/2015	C 8:00	Q1 2015		1.2		CHF
London	Sky PLC	SKY LN	21/4/2015	C 9:00	Q3 2015		0.145		GBp
New York	Baker Hughes Inc	BHI US	21/4/2015	C Bef-mkt	Q1 2015		0.514		USD
New York	EI du Pont de Nemours & Co	DD US	21/4/2015	C Bef-mkt	Q1 2015		1.316		USD
New York	Harley-Davidson Inc	HOG US	21/4/2015	C Bef-mkt	Q1 2015		1.25		USD
New York	Kansas City Southern	KSU US	21/4/2015	C Bef-mkt	Q1 2015		1.075	1.05	USD
New York	MGIC Investment Corp	MTG US	21/4/2015	C Bef-mkt	Q1 2015		0.219		USD
New York	United Technologies Corp	UTX US	21/4/2015	C Bef-mkt	Q1 2015		1.462		USD
New York	Pentair PLC	PNR US	21/4/2015	C Bef-mkt	Q1 2015		0.658	0.65	USD
Toronto	Teck Resources Ltd	TCK/B CN	21/4/2015	C Bef-mkt	Q1 2015		0.17		CAD
Xetra	SAP SE	SAP GR	21/4/2015	C Bef-mkt	Q1 2015		0.615		EUR
New York	Lockheed Martin Corp	LMT US	21/4/2015	C Bef-mkt	Q1 2015		2.499		USD
New York	Dover Corp	DOV US	21/4/2015	C 14:00	Q1 2015		0.713		USD
New York	Under Armour Inc	UA US	21/4/2015	C 14:15	Q1 2015		0.047		USD
New York	Verizon Communications Inc	VZ US	21/4/2015	C 14:30	Q1 2015		0.948		USD
New York	Chipotle Mexican Grill Inc	CMG US	21/4/2015	C 23:00	Q1 2015		3.622		USD
NASDAQ GS	Amgen Inc	AMGN US	21/4/2015	C Aft-mkt	Q1 2015		2.108		USD
New York	Nabors Industries Ltd	NBR US	21/4/2015	C Aft-mkt	Q1 2015		0.046		USD
NASDAQ GS	Yahoo! Inc	YHOO US	21/4/2015	C Aft-mkt	Q1 2015		0.185		USD
New York	Yum! Brands Inc	YUM US	21/4/2015	C Aft-mkt	Q1 2015		0.718	0.696	USD
New York	United Rentals Inc	URI US	21/4/2015	C Aft-mkt	Q1 2015		1.191		USD
NASDAQ GS	Broadcom Corp	BRCM US	21/4/2015	C Aft-mkt	Q1 2015		0.61		USD

(* Reported Value, (^) GAAP Value, (T) Tentative, (C) Confirmed Date, (E) Estimated Date

GREEK MARKET - Corporate Actions

General Meetings

Company	GM Date	Time	Type	Comments
Thrace Plastics Co SA	15/4/15	12.30	AGM	
Petropoulos	15/4/15	12.00	AGM	
Spider Metal Industry N Petsio	15/4/15	10.00	EGM	
Elval - Hellenic Aluminium Ind	17/4/15	9.30	EGM	
Nireus Aquaculture SA	20/4/15	15.00	AGM	
OPAP SA	20/4/15	14.00	AGM	
Thessaloniki Port Authority SA	22/4/15	13.00	AGM	
Petropoulos	24/4/15	12.00	AGM	
Attica Holdings SA	27/4/15	17.00	AGM	
Terna Energy SA	28/4/15	9.30	AGM	
Dias Aquaculture SA	28/4/15	14.00	EGM	
Athens Water Supply & Sewage C	29/4/15	11.00	AGM	
Ilyda SA	30/4/15	17.00	AGM	
Douros SA	30/4/15	11.00	AGM	
Stelios Kanakis SA	6/5/15	11.00	AGM	
AS Co	8/5/15	10.00	AGM	
Akritas SA	11/5/15	11.00	AGM	

AGM: Annual General Meeting, EGM: Extra-ordinary General Meeting, Rep: Repetitive Meeting

Dividends

Company	Interim Div 2014	X-Div Date	Remaining Div 2014	X-Div Date	Total Div 2014 (gross*)	X-Div Date	Capital Return	X-Div Date	Notes
Nexans Hellas SA							0.15 €		To be proposed at the 26/6/14 GM
Hellenic Exchanges - Athens St							0.20 €		To be proposed at the 17/6/14 GM
Elve SA							0.03 €		Approved by the 3/6/14 GM
Alpha Trust Mutual Fund & Alte							1.50 €		Approved by the 29/5/14 GM
FF Group							0.125 €		Approved by the 29/12/14GM
Flexopack SA							0.09 €		To be proposed
Hellenic Exchanges - Athens St					0.21		0.11 €		To be proposed
Kleemann Hellas SA							0.17 €	31/3/15	
Profile Systems & Software SA					0.02	26/03/15			0.02€ net of tax
Grivalia Properties REIC					0.20371	19/03/15			0.203714€ net
FHL I Kiriakidis Marbles - Gra					0.1006	19/03/15			0.09054€ net of tax
Bank of Greece					0.672	05/03/15			0.447552€ net of tax
Loulis Mills SA							0.09 €	2/2/15	
OPAP SA	0.2300 €	12/01/15			0.2017€ (gross) interim div. + 0.0283€ (net) distribution of tax free reserves (0.23€ total, 0.21€ net)				
GEKE SA					0.17	21/01/15			
Thrace Plastics Co SA							0.025 €	20/1/15	

* The abovementioned dividend amounts are subject to a 25% withholding tax (Law 3943/2011)

(1) 0.65€ from retained earnings & reserves + 0.15€ interim dividend 2014. Net amount equals to 0.5461€+0.1250€=0.672€

Rights Issue / Bonus Issue - (Reverse) Splits

Company	Terms	Ex-Date	Record Date	Exercise Period	Rights Trading Period	New shares trading day	Comments & Notes
Compucon Computer Applications	9 new / 4 old at 1.82€			-	-		Approved by the 6/5 GM
Ilyda SA	1 new / 100 old at 0.90€	13/10/14	15/10/14	16/10 - 30/10/2014	16/10 - 24/10/2014	18/11/14	Adjusted start share price 0.751€
Alco Hellas SA	Rev. Split: 1 new / 5 old	Cease of trading: 1/9/2014				5/9/14	
Kekrops SA	3 new / 1 old at 0.40€	5/8/14		11/8 - 25/8/2014	11/8 - 19/8/2014	29/8/14	
Compucon Computer Applications	Rev. Split: 1 new / 11 old	2/7/14	4/7/14	-	-	8/7/14	Adjusted start share price 0.418€
LAMDA Development SA	0.79469... new / 1 old at 4.25€	23/6/14	25/6/14	27/6 - 11/7/2014	27/6 - 7/7/2014	22/7/2014	
JUMBO SA	Bonus shares: 1 new / 22 old	5/3/14	7/3/14	-	-	11/3/2014	Approved by the 12/2 GM
Kathimerini Publishing SA	8 new / 1 old at 0.33€	4/3/14	6/3/14	10/3 - 24/3/2014	10/3 - 18/3/2014	28/3/14	Adjusted price €4.46 after the split,
Kathimerini Publishing SA	Rev. Split: 2 new / 10 old	4/3/14		-	-	10/3/14	€0.788 after the increase

Mergers

Company (1)	Absorbed Company (2)	Exchange Terms (1/1)	Exchange Terms (1/2)	Absorbed Company Cease Trading Day	New Shares Start Trading Day	Comments
Elval - Hellenic Aluminium Ind	ETEM SA	1 / 1	1 / 6	02/12/14	5/12/14	

IMPORTANT DISCLOSURES

DISCLAIMER

- This report has been compiled and issued by "Prelium Investment Services SA". "Prelium Investment Services SA" is liable neither for the proper and complete transmission of this report nor for any delay in its receipt. Any unauthorized use, disclosure, copying, reproduction or distribution of the specific research material contained in this report, in whole or in part, is strictly prohibited, without the prior written permission of the issuer ("Prelium Investment Services SA"). All opinions and estimates expressed in this report reflect the personal views and judgments of the author and are given in good faith. In addition, those opinions and estimates apply as of the date of issuance of this report but are subject to change without any prior notice. Although the information herein was obtained from sources which are deemed reliable, "Prelium Investment Services SA" does not guarantee their accuracy or completeness. The recipient of this report accepts that "Prelium Investment Services SA" shall not be liable for any errors or omissions of the present report or in the reproduction, copying or transmission of the information contained in the present report and such errors and omissions can not establish any claim related to indemnity or action against any officer or employee of "Prelium Investment Services SA" for any losses arising from such errors or omissions.
- This report is prepared exclusively for the clients of "Prelium Investment Services SA". Neither the information contained in this report nor any opinion expressed constitutes an offer, an advice, or an invitation to make an offer, to buy, or sell or subscribe for any financial instrument mentioned herein. Investors should not in any case rely exclusively upon information contained in this report in order to form any investment decision, but they should at their own and acting on an independent basis, analyze, evaluate and assess the appropriateness and the value of any particular investment, using the statements and recommendations of this report only as one of the factors which could effect their investment decisions. Investors should be aware of the fact that income from securities or financial instruments, if any, may fluctuate and that each security's or financial instrument's price or value may rise or fall. Accordingly, investors may receive back less than originally invested or may lose their entire originally invested capital. "Prelium Investment Services SA" shall not be liable for any investment decision which is taken in compliance with that information.
- Foreign currency rates of exchange may adversely affect the value, price or income of financial instruments mentioned herein. In addition, investors in financial instruments, such as ADRs, whose value are influenced by the currency of the underlying financial instrument, effectively assume currency risk.
- Unless otherwise agreed in writing with Prelium Securities and Investment Services SA, this research is intended solely for internal use by the recipient.

IMPORTANT REGULATORY DISCLOSURES ON SUBJECT COMPANY AND INTERNAL PROCEDURES

- The information and opinions contained in this report were compiled by Prelium Investment Services SA, which is a member of the Athens Stock Exchange and is regulated by the Hellenic Capital Market Commission. The compensations of the research analysts principally responsible for the preparation of this research report may depend on various factors, such as quality of work, stock picking, client feedback and overall firm profitability and those compensations should not in any case originate from persons who have substantial interests in the result of the present research report. Prelium Investment Services SA has not entered with the subject company (-ies) into any contract, whose object shall be the preparation of this report.
- This report has been published in accordance with the conflict of interests' management policy and the relevant guidelines which have been enacted and applied by the Company. Any research analyst responsible for the content of this research report is compelled to notify the circumstances which can affect the objectivity of the present analysis, especially in the case that he has a significant financial profit from the financial instruments mentioned herein or in the case that he has substantial conflict of interests with the issuer mentioned herein. According to the policies of Prelium Investment Services SA, the Research Department is bound by confidentiality, with the exception of data allowed to be published in accordance with the provisions of the capital market legislation in force. The communication between the Research Department and the other departments of Prelium Investment Services SA is restricted by Chinese Walls set between the different departments, so that Investment Services SA can comply with the provisions and regulations regarding confidential information and market abuse. In this context and before the transmission of the present analysis, the issuers, the directors and the employees of Prelium Investment Services SA, and any other person with the exception of the research analysts who are responsible for the preparation of this report, are not entitled to have access and examine the present analysis in order to verify the accuracy of the actual facts referred to this report or for any other reason, apart from the ascertainment of the compliance of Prelium Investment Services SA with its legal obligations, provided that the report contains ratings or target price.

ANALYSTS CERTIFICATION

Each research analyst primarily responsible for the content of this report, in whole or in part, certifies that with respect to each company/ issuer that the analyst covered in this report: a) all of the views referred herein reflect his or her personal views about those financial instruments or issuers; b) no part of his/her compensation was, is or will be, directly or indirectly, related to the specific recommendations or views expressed by that research analyst in the research report, c) he/she has not received financial incentives and earnings by any person who has substantial interests in the publication of the present research report, and d) he/she has not promised to the issuer mentioned in the present analysis any favorable coverage. The name of the research analyst primarily responsible for the content of this research report is stated on the first page of this report.

DISCLOSURE CHECKLIST FOR COMPANIES MENTIONED AND OTHER PRICE DATA INFORMATION

None of the below mentioned are valid for the listed companies mentioned in this report

1. Prelium Investment Services has acted as manager/co-manager/adviser in the underwriting or placement of financial instruments of the company mentioned in this report within the past 12 months.
2. Prelium Investment Services had a contractual relationship or has received compensation for investment banking from the company mentioned in this report within the past 12 months.
3. Prelium Investment Services acts as a market maker for the company mentioned in this report.
4. Prelium Investment Services owns five percent or more of the total share capital of the company mentioned in this report at the date of issuance of this report.
5. The company mentioned in this report owns five percent or more of the total share capital of Prelium Investment Services at the date of issuance of this report.
6. Prelium Investment Services SA has other financial interests related to the company mentioned in this report at the date of issuance of the latter.
7. The following research analysts who participate in the preparation of this report have the following financial interests related to the company covered by this report.....

PRELIUM INVESTMENT SERVICES S.A. RATING DISTRIBUTION

As of	15-Apr-2015	Outperform	Neutral	Underperform	Under Review / Not Rated	Restricted
% distribution breakdown		0%	0%	0%	100%	0%

OTHER IMPORTANT DISCLOSURES

- The present research report has been published for the first time today/ or on the..../.....
- The above research material is provided to investors exclusively for information purposes and is not to be used or considered as an offer, advice or invitation to sell or buy or subscribe for any financial instrument mentioned in the present report. Prelium Investment Services SA shall not treat recipients as its customers by virtue of receipt of this report. Investors should not in any case rely exclusively upon information contained in this report in order to form any investment decision, but they should at their own and on an independent basis analyze, evaluate and assess the appropriateness and the value of any particular investment, using the statements and recommendations of this report only as one of the factors which could effect their investment decisions The investments or services contained or referred to in this report may not be suitable for all investors and it is recommended that the investors, apart from the independent evaluation of particular investment and strategies, should consult an independent investment advisor if they are in doubt about such investments or investment services. Securities or the other financial instruments referred to in the research report are subject to investment risks, including the possible loss of the principal capital invested.
- The clients of Prelium Investment Services SA may already have or may have in the future a position or engage in transactions in any of the financial instruments mentioned herein or any related investment.
- Although the information or opinions herein was obtained or compiled from sources that are deemed reliable, the accuracy, completeness or correctness of those information or opinions can not be guaranteed. In producing the research reports, members of Prelium Investment Services SA Research Department may have received assistance from the subject company (-ies), referred to in this report. Any such assistance may include access to sites of the issuers, visits to certain operations of the subject company (-ies), meetings with management, employees or other parties associated with the subject company (-ies), and handing by them of historical data regarding the subject company (-ies) (financial statements and other financial data), as well as of all publicly available information regarding strategy and financial targets. Prelium Investment Services SA research personnel are prohibited from accepting payment or reimbursement of travel expenses from site visits to subject companies. It should be presumed that the author of this report, in most cases, has had discussions with the subject company (-ies) to ensure factual accuracy prior to publication. All opinions and estimates in this report reflect the personal views and judgments of the author and are given in good faith. In addition, those opinions and estimates apply as of the date of the issuance of this report but are subject to changes without any prior notice. Prices and availability of financial instruments are also subject to changes without prior notice. It should be assumed that any prices quoted in this report are the closing prices of the last session of the Athens Stock Exchange, unless otherwise indicated. Although Prelium Investment Services SA does not set a predetermined frequency for publications, it is in the intention of Prelium Investment Services SA to provide research coverage of the subject company (-ies), including in response to any news affecting these issuers, unless there is lack of news and capacity. Prelium Investment Services SA does not accept any liability whatsoever for any direct or consequential loss arising from any use of this document or its contents or in respect of any errors or omissions thereto.

PRELIUM SECURITIES & INVESTMENT SERVICES S.A.

Member of the Athens Stock Exchange, Member of the Athens Derivatives Exchange
Head Office: S. Davaki 1 & Kifisias Ave., 115 26 Athens, Greece, Tel. +30 210 36 77 000, Fax +30 210 69 26 403
e-mail research@prelium.com, www.prelium.com

INSTITUTIONAL SALES

Babis Angeletopoulos, b.angeletopoulos@prelium.com

FOREIGN MARKETS

Ioanna Karamani, i.karamani@prelium.com

DERIVATIVES

Andreas Nikolopoulos, a.nikolopoulos@prelium.com

RESEARCH DEPARTMENT

Emi Moundrou, e.moundrou@prelium.com

ASSET MANAGEMENT

Konstantinos Asimakopoulos, K.Asimakopoulos@prelium.com